

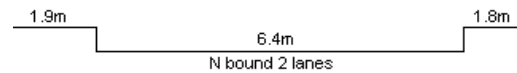
YEAR 2022

COVER AGE (B) STATION 2403

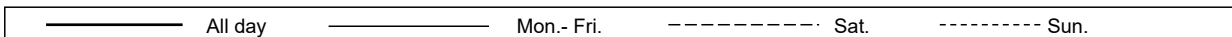
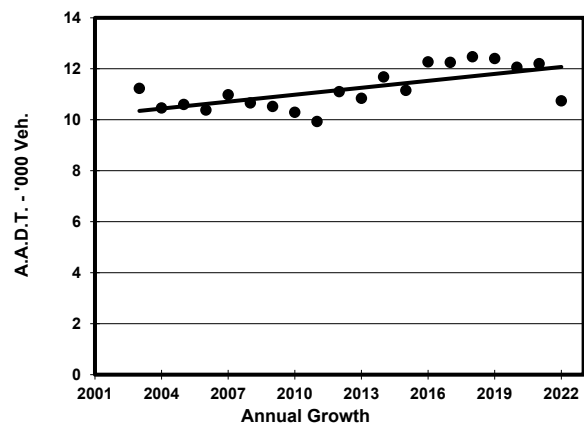
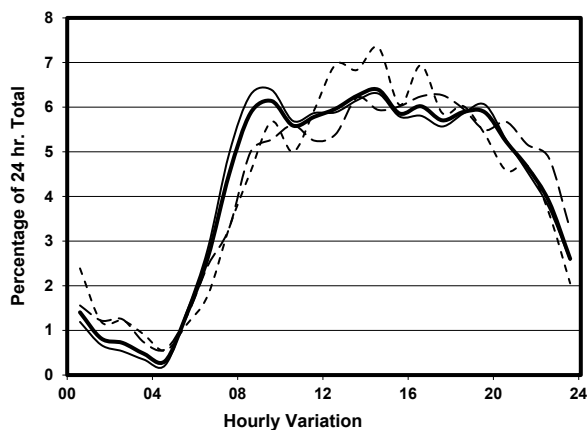
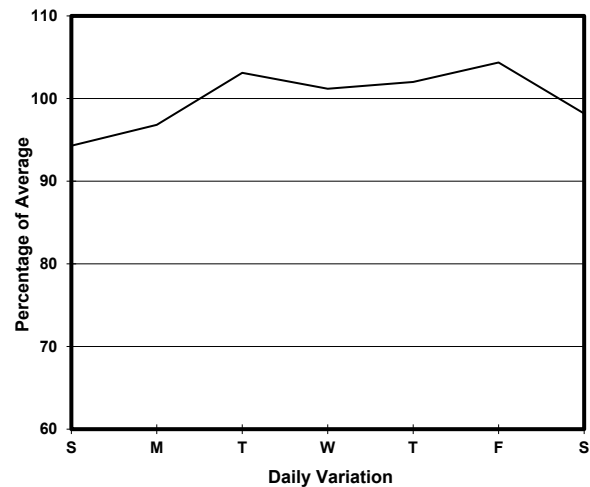
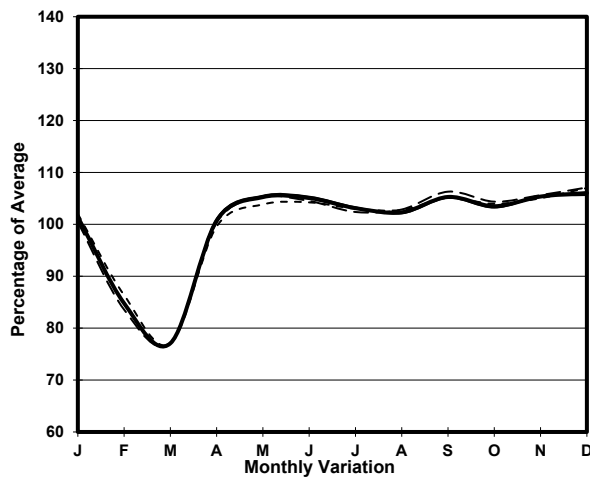
ROAD NETWORK MINOR

ROAD TYPE LOCAL DISTRIBUTOR

LINK ICE HOUSE ST (from CONNAUGHT RD C to LOWER ALBERT RD)



## 1. TRAFFIC FLOW VARIATION AND GROWTH



## 2. TRAFFIC CHARACTERISTICS (BY DIRECTION)

Parameter	All - Day	Mon. - Fri.	Sat.	Sun.
<b>NORTH BOUND</b>				
A.A.D.T.	10740	10910	10660	10180
R 12 / 24 - %	70	70.6	66.5	70.5
R 16 / 24 - %	89.6	90.2	87.6	88.8
AM Peak Hour	0900-1000	0900-1000	0900-1000	0900-1000
One-way flow at AM peak hour	660	700	560	580
T - % (AM)	-	11.1	-	-
PM Peak Hour	1600-1700	1800-1900	1700-1800	1600-1700
One-way flow at PM peak hour	650	640	670	710
T - % (PM)	-	6.3	-	-
Prop.of commercial vehicles - 16 hr.	-	8	-	-
 A.A.D.T.	-	-	-	-
R 12 / 24 - %	-	-	-	-
R 16 / 24 - %	-	-	-	-
AM Peak Hour	-	-	-	-
One-way flow at AM peak hour	-	-	-	-
T - % (AM)	-	-	-	-
PM Peak Hour	-	-	-	-
One-way flow at PM peak hour	-	-	-	-
T - % (PM)	-	-	-	-
Prop.of commercial vehicles - 16 hr.	-	-	-	-

## 3. OTHER INFORMATION AND COMMENT

**4. Vehicle classification and occupancy - Monday to Friday**

Time		Class of vehicle									
		Motor Cycle	Private Car	Taxi	Private LB	PLB	Goods veh.		Non Fr. Bus	Fr. Bus	
							Light	M & H		SD	DD
0700-0800	Pro	1.6	15.7	48.8	0.0	14.2	3.2	1.6	14.2	0.0	0.8
	Ocp	1.0	1.5	1.9	0.0	9.4	1.5	1.0	4.6	0.0	18.5
0800-0900	Pro	2.6	28.2	40.2	0.9	7.7	5.1	0.0	14.5	0.0	0.9
	Ocp	1.0	1.7	1.9	8.0	7.4	1.2	0.0	6.1	0.0	30.5
0900-1000 Peak hour	Pro	3.1	31.4	39.8	1.5	4.6	8.4	0.8	9.2	0.0	1.2
	Ocp	1.0	1.6	1.9	5.0	5.2	1.7	4.0	7.8	0.0	19.0
1000-1100	Pro	4.2	36.1	36.9	0.8	5.0	10.1	0.0	5.9	0.0	1.0
	Ocp	1.0	1.4	1.5	5.0	8.2	1.5	0.0	7.9	0.0	14.2
1100-1200	Pro	5.8	38.1	34.0	0.0	6.6	6.6	1.7	6.6	0.0	0.6
	Ocp	1.0	1.5	2.0	0.0	8.1	1.6	1.0	3.9	0.0	20.3
1200-1300	Pro	6.6	41.4	38.1	0.8	5.8	1.7	0.0	5.0	0.0	0.6
	Ocp	1.0	1.3	1.3	4.0	12.3	1.0	0.0	10.2	0.0	25.0
1300-1400	Pro	1.1	47.9	33.0	1.1	6.4	4.3	0.0	5.3	0.0	1.1
	Ocp	1.0	1.2	1.5	6.0	4.5	1.3	0.0	7.0	0.0	17.0
1400-1500	Pro	4.8	39.7	38.1	0.8	4.8	4.8	0.0	6.4	0.0	0.8
	Ocp	1.0	1.4	1.5	8.0	7.8	1.7	0.0	5.5	0.0	15.0
1500-1600	Pro	1.0	57.7	20.9	1.0	6.0	6.0	1.0	6.0	0.0	0.5
	Ocp	1.0	1.5	1.3	6.0	10.7	1.7	1.0	3.2	0.0	20.0
1600-1700	Pro	2.4	50.4	31.7	1.6	4.1	4.1	0.0	4.9	0.0	0.8
	Ocp	1.0	1.4	1.5	3.5	9.8	1.6	0.0	5.7	0.0	12.5
1700-1800	Pro	3.7	43.3	33.6	0.0	5.2	3.7	0.7	9.0	0.0	0.7
	Ocp	1.0	1.3	1.5	0.0	11.9	1.2	2.0	4.0	0.0	15.5
1800-1900	Pro	4.8	41.1	44.7	0.6	2.4	0.0	0.0	6.0	0.0	0.3
	Ocp	1.0	1.3	1.3	6.0	14.0	0.0	0.0	7.2	0.0	29.0
1900-2000	Pro	8.8	35.2	45.3	0.0	2.0	0.0	1.4	6.8	0.0	0.5
	Ocp	1.0	1.3	1.2	0.0	8.7	0.0	1.5	4.3	0.0	15.3
2000-2100	Pro	15.3	19.4	56.1	0.0	3.1	1.0	0.0	4.1	0.0	1.0
	Ocp	1.1	1.4	1.1	0.0	10.7	1.0	0.0	1.5	0.0	4.3
2100-2200	Pro	3.8	26.7	59.7	1.3	2.5	3.8	0.0	1.3	0.0	1.0
	Ocp	1.0	1.7	1.1	4.0	5.5	1.7	0.0	2.0	0.0	5.7
2200-2300	Pro	2.3	29.9	62.1	0.0	4.6	0.0	0.0	0.0	0.0	1.2
	Ocp	1.0	1.7	1.7	0.0	10.5	0.0	0.0	0.0	0.0	5.5
16 hours	Pro	4.7	37.5	40.1	0.7	5.0	4.0	0.4	6.8	0.0	0.8
	Ocp	1.0	1.4	1.5	5.3	9.0	1.5	1.6	5.7	0.0	16.5

**Legend: Pro.** Proportion of vehicles in % (Sum may not add up to 100% due to figure rounding)\*

**Ocp.** Average occupancy of vehicles including both driver and passengers\*

**M&H** Medium and Heavy

\* All traffic data are collected from combined bounds